

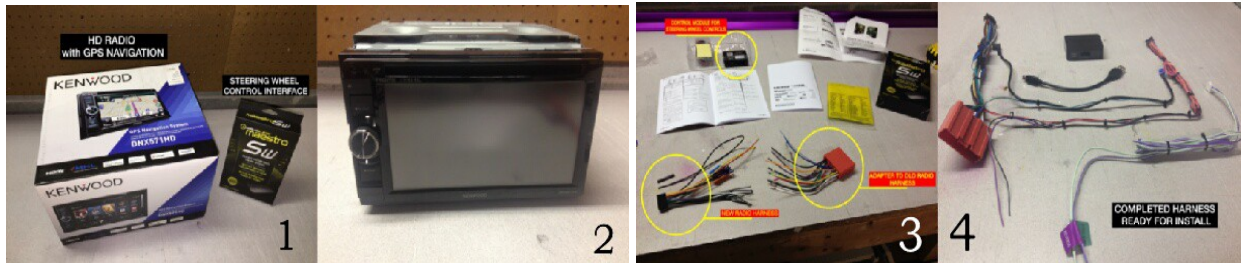
# In Dash Radio/GPS/Info Screen

## In Ed's NC Miata

I was looking at Ed Thuresson's 2007 Red PRHT Miata GT interior at a recent event, and I felt what he did was worth writing about. I am showing you this in case there might be someone else interested in doing this, or having it done to their Miata. Here is an article on what he did, and please ask Ed to tell you "how". Ed removed the In-Dash Bose Stereo, and installed a combination Radio, GPS, and DVD player, all on a large electronic Touch Screen display. He really did a NICE job on this too. Ed has a business making banners, signs, and car graphics, and he did this superb job all himself.

It is a Kenwood Touch-Screen Combo Radio with GPS, Full HD, Sirius XM, and Bluetooth for hands free cell phone use. It also has an I-Pod hook up, DVD player, and a Back-Up Camera. When paired with its Steering Wheel control module, it looks and works like it came like this from the factory. Ed bought this at "Best Buy", and it can be done for about 2/3 the cost of having this installed on a new car from the factory. This is something you might even do yourself!

Picture 1 is the radio and steering wheel controls in their boxes. Picture 2 is the Radio unit out of the box. I thought showing these to you would help you identify them in the store. Picture 3 shows the separate wiring parts, and picture 4 shows how Ed put them together in harnesses ready for the install.



Picture 5 shows you what the dash looks like after the factory radio has been removed. I have had my radio out once. It is tricky, but not overly difficult. Picture number 6 shows the dash with the new radio installed. It looks like a professional installation, doesn't it?

Picture 7 shows the full control of the sounds. It has volume, an equalizer, and all other functions of a high end stereo system. Picture 8 is the GPS unit. Everything can be controlled either at the radio, or by the remote controls he installed in the steering wheel. Wow, what a set-up!



Next time you see Ed and his wife in their shiny Red PRHT with white stripes, stop over and have him show it to you. He did a job to be proud of. Thanks to Ed for supplying these pictures, and remember this is something than can be installed in your Miata too. This is not something I would try, so please contact Ed if you need more info or have any questions. E-mail Ed at: [signwizard@comcast.net](mailto:signwizard@comcast.net).

Zoom-Zoom!  
Bill Latsha